

The daily evidence digest collates recently released reports and evidence – provision of these links does not imply endorsement nor recommendation.

High flow nasal cannula, diabetes, COVID-19 reinfection, physical distancing, data visualisation

Peer reviewed journals featured

- Systematic reviews of the effectiveness of high-flow nasal cannula for acute hypoxemic respiratory failure in patients with COVID-19 and risks of aerosolisation, dispersion, and transmission [here](#)
- A systematic review and meta-analysis of renin-angiotensin-aldosterone system inhibitors in 28,872 patients with COVID-19 [here](#)
- A population-based, prospective cohort study of diabetes, glycaemic control, and risk of COVID-19 hospitalisation [here](#)
- International experience of mechanical thrombectomy during COVID-19 [here](#)
- Commentary on obesity in young adults and COVID-19 [here](#)
- A discussion of sex differences in immune responses that underlie COVID-19 outcomes [here](#)
- A retrospective, multicentre study across Spanish emergency departments of unusual presentations in patients with COVID-19 [here](#)
- A discussion about the UK national decision support guidelines in triage [here](#)
- An analysis of the evidence for physical distancing [here](#)
- A description of 3-D printed polyester tipped swab [here](#)
- A description of a rapid cycle system improvement for COVID-19 readiness [here](#)

Pre-peer review articles featured

- Assessment of the risk of SARS-CoV-2 reinfection in an intense re-exposure setting [here](#)

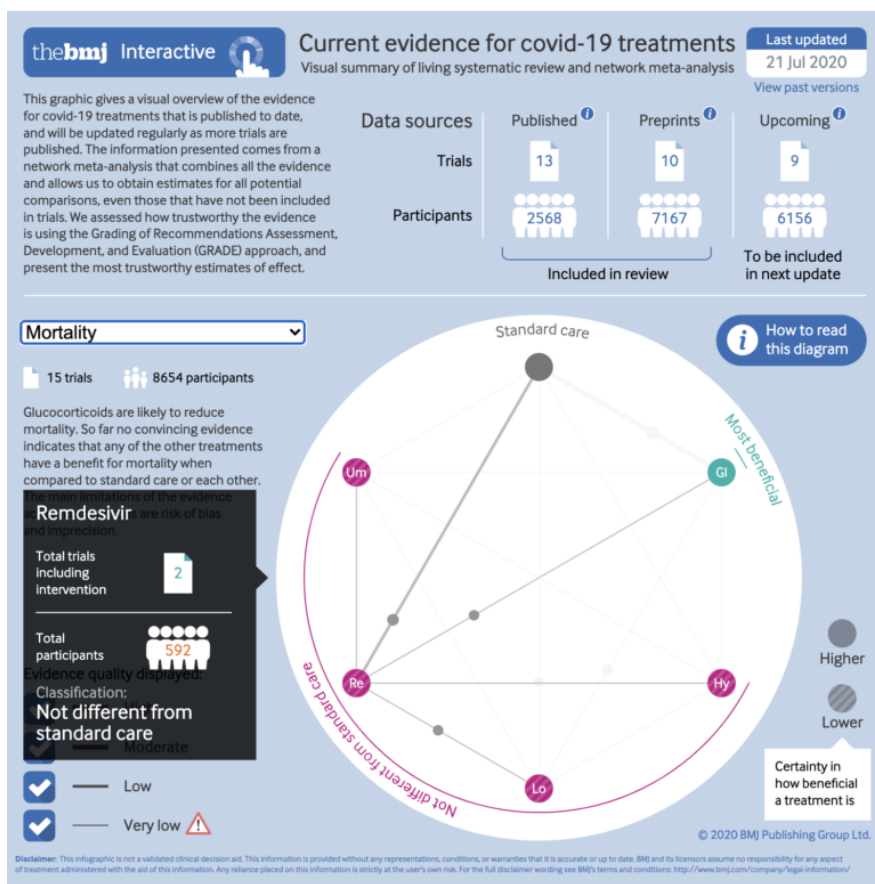
Guidance and reports

- The Cochrane Library released a systematic review of rapid, point-of-care antigen and molecular-based tests for diagnosis of SARS-CoV-2 [here](#)
- The World Health Organisation released guidance on:
 - Management in hotels and other entities in the accommodation sector [here](#)
 - an COVID-19 essential supplies forecasting tool - structure, methodology, and assumptions [here](#) and frequently asked questions [here](#)

News and blogs

- A case report on a confirmed case of COVID-19 reinfection [here](#)
- Chronic kidney disease as a key risk factor for COVID-19 mortality [here](#)
- A BMJ blog on visualising meta-analysis of COVID-19 treatments (see Figure 1) [here](#)
- A BMJ Opinion piece on women working in health [here](#)

Figure 1: [Visualising meta-analysis](#)



Critical Intelligence Unit: last chance to share an indirect impact of COVID-19

We are assessing the indirect impact of COVID-19 – focusing particularly on the consequences of missed or delayed healthcare. Sign up and share an example of an indirect impact of COVID-19 [click here](#) or email NSWH-CriticalIntelligenceUnit@health.nsw.gov.au

[Click here](#) to subscribe the daily evidence digest and share on Twitter using #NSWHealthCIU