



CIAP Newsletter

Upcoming: Allied Health EBP & Database Searching Workshop
When: 14 May 2026 08:30 - 12:00
Where: ONLINE

Register

Program

DynaMed and Isabel, Available Now on CIAP

DynaMed®

Join an Live DynaMed & Isabel Overview Session:

- **When:** Wednesday 13 May, 12.30-1PM
- **Where:** Virtual (Microsoft Teams)

Register

- **When:** Wednesday 20 May, 12.30-1PM
- **Where:** Virtual (Microsoft Teams)

Register

Or Watch the Overview Session On-Demand:

Watch

Further Education and Resource Links

DynaMed User
Guide

DynaMed Quick
Overview

DynaMed Detailed
Overview

From April 2 2026 - June 30 2026 you will have access to the trial of DynaMed and Isabel via CIAP.

DynaMed is a clinical decision support tool that provides access to guidelines, algorithms, discharge planning resources, as well as images and videos. You can create a free profile to follow specific specialties or topics of interest, with updates delivered via email or homepage alerts. Your profile will also allow you to track activity for CPD points.

The DynaMed clinical editorial team continuously monitors the medical literature, critically appraises new evidence, and updates recommendations on a daily basis to ensure content remains current.

Isabel is a differential diagnosis tool accessible within DynaMed, which allows clinicians to input patient details, an extensive range of symptoms, and geographical context. It then generates a ranked list of potential diagnoses based on matching characteristics, highlighting likelihood indicators and key red flags. Each condition links directly to relevant DynaMed content for further guidance on management and clinical decision-making.

[Try DynaMed and Isabel via CIAP here.](#)

Access now via CIAP.

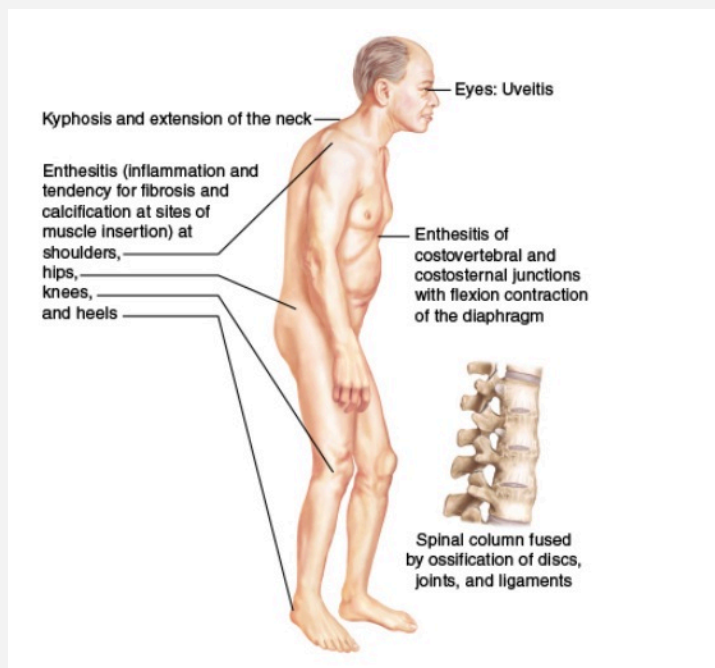
What's the Diagnosis?



Chronic, multisystem, inflammatory seronegative arthritis that primarily affects the sacroiliac, apophyseal, and costocervical joints, and adjacent ligamentous or tendinous attachments to bones.

Physical Findings

- Stiffness or limited motion of the lumbar spine identified by the following simple tests:
 - Modified Schober's test*: Serial measures allow the practitioner to assess the progression of the restriction and lumbar disease.
 - Lumbar side flexion*: Lateral flexion becomes limited.
 - Occiput to wall distance measure*: Normally, people can touch their head to the wall. Occiput to wall measures greater than 2 cm in people with this condition.
 - Measurement of chest expansion at the fourth intercostal space*: If the measure is less than 5 cm, the result is abnormal. This measure may be normal in early-stage disease.
- Pain and limited chest expansion
- Kyphosis
- Iritis
- Warmth, swelling, or tenderness of affected joints
- Possible sausage shape to small joints, such as toes
- Aortic murmur caused by regurgitation
- Cardiomegaly
- Upper lobe pulmonary fibrosis, which mimics tuberculosis and may reduce vital capacity to 70% or less of predicted volume



What's the diagnosis? Find out the answer [here](#) in Lippincott Advisor.

Access provided by CIAP.

New Rehabilitation Procedures on Lippincott Procedures



Access step-by-step guidance on performing various clinical procedures, including newly added rehabilitation procedures including:

- Assessment of bathing, rehabilitation
- Assessment of dressing, rehabilitation
- Assessment of eating, rehabilitation
- Assessment of toileting, rehabilitation
- Assessment of oral care, rehabilitation
- Circumferential girth measurement, rehabilitation
- Cognitive assessment, rehabilitation
- Dynamic hip precautions, rehabilitation

- Spinal precautions, rehabilitation
- Depression screening, rehabilitation

New procedures are continuing to be in development on Lippincott Procedures - check out the latest rehabilitation procedure [here](#).

Access provided by CIAP.

Virtual Reality-Based Reminiscence Therapy for Older Adults to Improve Psychological Well-Being and Cognition



Reminiscence therapy (RT) is a popular non-pharmacological intervention that uses supporting materials such as music, pictures and objects to reignite the memories of the past. RT has numerous benefits, such as an improved quality of life and lower depressive symptoms. Furthermore, RT is affirmed by many as it brings out the individual's preserved abilities rather than their impairment. Numerous reviews examining the effectiveness of RT attest to its effectiveness on psychological well-being and cognitive function. Given the benefits of reminiscence and its natural phenomenon in an individual's everyday life, RT should not go unnoticed as a form of intervention and a means to facilitate healthy ageing.

With the shift toward a community-based care model, virtual reality (VR) could serve as a medium to conduct RT for patients to reminisce in any setting, such as a nursing home. VR can be delivered using different levels of immersion.

Individually, VR and RT are advantageous. Multiple studies have combined both concepts to form VR-RT as one intervention, reporting a significant improvement in cognitive function and psychological well-being. The possible mechanism of VR-RT lies in their mechanisms working in tandem. The four essential components of VR, specifically, a virtual world, immersion, sensory feedback and interactivity, work in unison to facilitate the mechanism of VR. The mechanism of RT lies in the ability to elicit a psychological and physiological response similar to a real-world environment, to personalise the contents and to increase participants' engagement during therapy through immersive and enjoyable environments.

Read more of this article in the [Journal of Clinical Nursing](#).

Access provided by CIAP.

Case 13-2026: A 76-Year-Old Woman with Fatigue, Rash, and Kidney Failure



A 76-year-old woman was transferred to the medical service of this hospital because of rapidly progressive kidney failure.

The patient had been in her usual state of health until 1 year before the current presentation, when a painless purpuric rash on the lower legs developed. The rash waxed and waned. There was no joint pain, edema, weakness, or weight loss. The patient was seen by a dermatologist at another hospital, and the results of a skin biopsy were reportedly consistent with leukocytoclastic vasculitis. The results of urinalysis and kidney-function tests were normal. Her symptoms were attributed to a history of hepatitis C virus (HCV) infection; topical glucocorticoid treatment was initiated, and the rash resolved.

Four weeks before the current presentation, the patient had persistent sinonasal congestion, drainage, and pain, and she received amoxicillin as treatment for presumptive bacterial sinusitis...

Read more of this patient case in the [New England Journal of Medicine](#).

Access provided by CIAP.

Upcoming CIAP Events

**CIAP Allied Health EBP & Database
Searching Workshop**

14 May 2026 08:30-12:00
Virtual (Microsoft Teams)

[Register](#)

**CIAP EBP & Database Searching
Workshop**

27 May April 2026 08:30-12:00
Virtual (Microsoft Teams)

[Register](#)

Need help with CIAP?
Contact the CIAP [helpdesk](#) 24 hours, 7 days a week.
1300 28 55 33 or visit the CIAP [Support page](#).

[LinkedIn](#) |
[Twitter](#)



eHealth NSW

Copyright © 2026 eHealth NSW
All rights reserved.

This email was sent by CIAP Team, eHealth NSW - CC 652950, Tower B, Level 13,
Zenith Centre, 821 Pacific Highway, Chatswood, NEW SOUTH WALES 2067,
Australia to

[Unsubscribe](#)